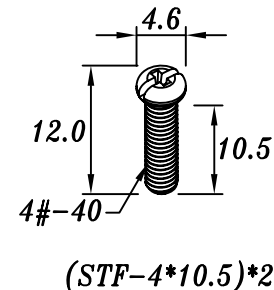
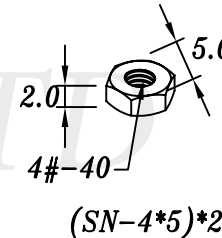
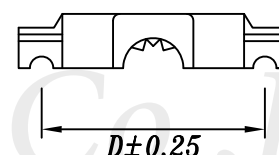
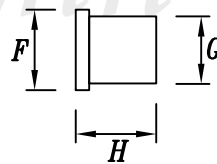
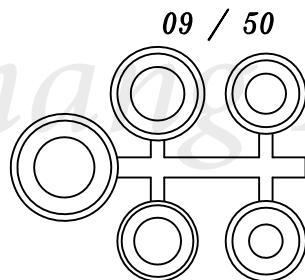
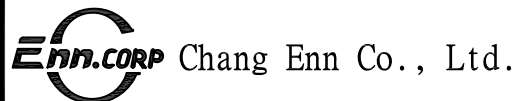
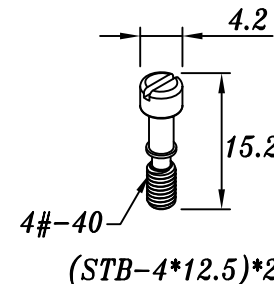


E: For Cable DIA

09S	5.0	6.0	7.0	8.0	9.0
15S	5.0	6.0	7.0	8.0	9.0
25S	6.0	7.0	8.0	9.0	10.0
37S	9.0	10.0	11.5	13.0	14.5
50S	9.0	10.0	11.5	13.0	14.5



	A	B	C	D	F	G	H	STF-4*10.5	STF-4*12.5	STB-4*12.5	SN-4*5	SSW-4
09S	31.5	53.0	16.6	25.0	12.0	10.0	12.0	2PCS		2PCS	2PCS	2PCS
15S	40.0	48.0	15.8	33.3	12.0	10.0	12.0		2PCS	2PCS	2PCS	2PCS
25S	53.5	48.0	16.0	47.0	14.0	12.0	14.0		2PCS	2PCS	2PCS	2PCS
37S	69.2	48.5	16.5	63.5	18.0	16.0	18.0		2PCS	2PCS	2PCS	2PCS
50S	67.0	48.4	18.8	61.0	18.0	16.0	18.0		2PCS	2PCS	2PCS	2PCS



NO.410, FU-TEH 1ST ROAD,  
SHIJR, TAIPEI COUNTY  
221, TAIWAN, R.O.C.

TEL: 886-2-26945824

FAX: 886-2-26946971

TITLE

PARTS NO.

DWG, NO.

Kit Consists And  
Metal Hoods  
Short Screw

PM03-09~50S

GENERAL  
TOLERANCE

DIM:  
X. ±0.30  
X.X ±0.20  
X.XX ±0.10

DRAWN

CHECK

APPROVE

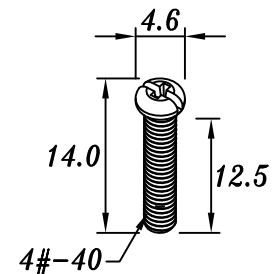
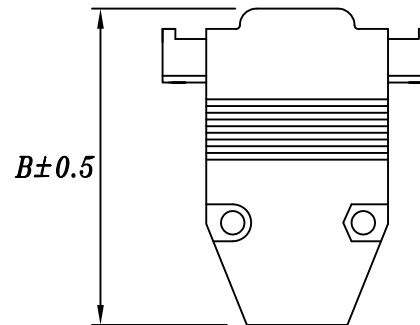
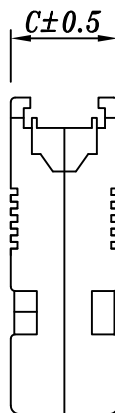
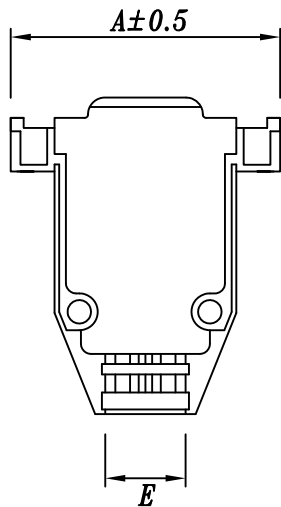
SCALE

DATE 102/11/22

DATE 103/10/30

DATE

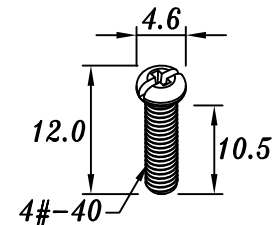
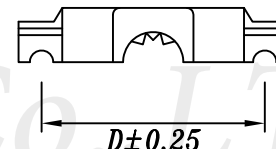
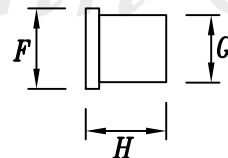
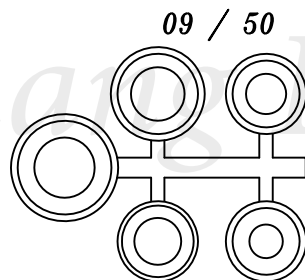
UNIT MM REV. B



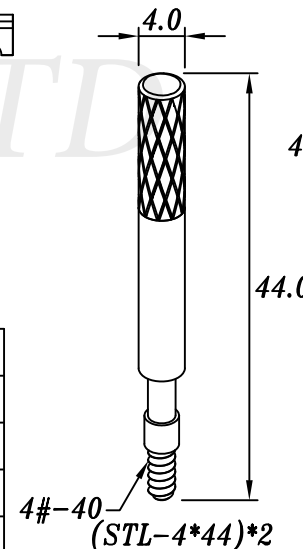
(STF-4\*12.5)\*2

E: For Cable DIA

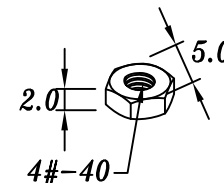
09L	5.0	6.0	7.0	8.0	9.0
15L	5.0	6.0	7.0	8.0	9.0
25L	6.0	7.0	8.0	9.0	10.0
37L	9.0	10.0	11.5	13	14.5
50L	9.0	10.0	11.5	13	14.5



(STF-4\*10.5)\*2

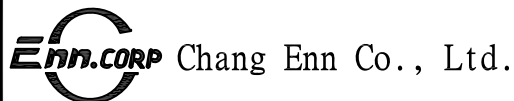


(STL-4\*44)\*2



(SN-4\*5)\*2

	A	B	C	D	F	G	H	STF-4*10.5	STF-4*12.5	STL-4*44	SN-4*5
09L	31.5	53.0	16.6	25.0	12.0	10.0	12.0	2PCS		2PCS	2PCS
15L	40.0	48.0	15.8	33.3	12.0	10.0	12.0		2PCS	2PCS	2PCS
25L	53.5	48.0	16.0	47.0	14.0	12.0	14.0		2PCS	2PCS	2PCS
37L	69.2	48.5	16.5	63.5	18.0	16.0	18.0		2PCS	2PCS	2PCS
50L	67.0	48.4	18.8	61.0	18.0	16.0	18.0		2PCS	2PCS	2PCS



NO.410, FU-TEH 1ST ROAD,  
SHIJR, TAIPEI COUNTY  
221, TAIWAN, R.O.C.

TEL: 886-2-26945824

FAX: 886-2-26946971

TITLE

PARTS NO.

DWG, NO.

Kit Consists And  
Metal Hoods  
Long Screw

PM03-09~50L

GENERAL  
TOLERANCE

DIM:  
X. ±0.30  
X.X ±0.20  
X.XX ±0.10

DRAWN

CHECK

APPROVE

SCALE

DATE

DATE

DATE

UNIT

102/11/22

103/10/30

MM REV. B